

QUICKSTART DOKOM MOBILE

- Push the workabout into the docking station.
- After connecting the power supply the green LED should lightning (right down).
- Please connect the rs232 – cable between the docking station and your pc.
- For checking the active workabout - connection between the pc and the docking station the yellow LED is lightning. The yellow LED is left to the green power LED. IF the LED isn't lightning go through following steps: press the menu button -> press on system screen -> press on the menu button-> go on spec with help of the arrow keys ->go on remote link -> press enter -> active the connection with port c and 19200 baud. Put the workabout into the docking station and press enter.Go on exit ->press Yes. Now you have the PSION Window and the yellow LED should lightning.
- Now the data transfer is possible.



- Please install the PS WIN Software on your pc.
- For this click on the file SETUP for starting the installation.
- Go through the whole installation.



- For checking the pc - communication between the workabout and the PSIN WIN Software, please click in PSION Arbeitsplatz after you have restarted your pc.



- Now a window with the try to activate the transfer connection appears.

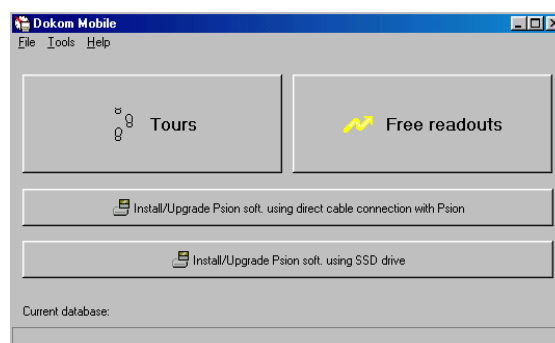


- After a few seconds the minus symbol right down In the taskbar should change into a sinus symbol.

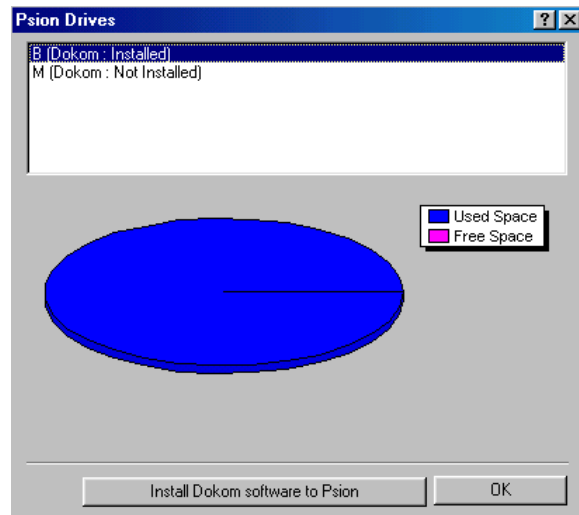


- Now, please install the DOKOM MOBILE Software by clicking on the file: **MO_INV.exe**. Start the software. Following window appears:

- Please click in the menu – point Install/Upgrade of DOKOM MOBILE.



- Now, following window appears. The installation of the software on the workabout can now be started by clicking on „Install dokom mobile to psion“ The installation of the DOKOM MOBILE Software on the psion takes place.



- For a readout you connect different types of couplers to the interfaces of the workabout. The workabout has two types of interfaces: The TTL and the RS 232 interface (see the right picture). Depending on the type of coupler you have to connecto the right coupler to the right interface. (read the following description).



Inductive readout:



MDK = Mobile Datacoupler, serial/TTL

Optical readout:



ODK = Optical Datacoupler, serial

Radio readout:

RAMAR Hantrack, TTL



- Press on the enter button of the workabout. The software DOKOM MOBILE will be started and is ready for a readout, now.