

Special Features

- AMR interface to all meters with pulse interface
- Key date billing
- Mobile Reading "Walk-by"
- Fixed Network Reading

Description

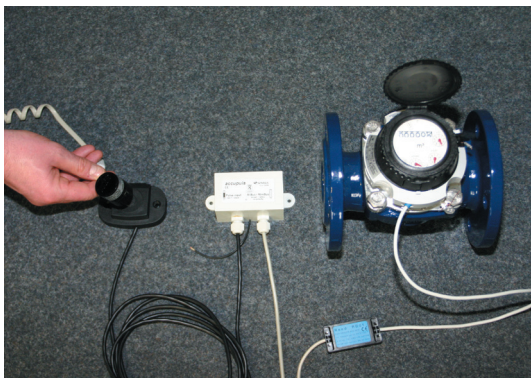
The accupuls collects pulses and multiplies pulse value with its physical unit to a register index and stores additional values such as:

- Monthly / Annual values
- Current flow rate
- Minimum / Maximum flow rate

This data can be read mobile with a handheld computer or read remotely in an M-Bus wired fixed network.

Accupuls can read out meters without data interface, these can be:

- Bulk water meters \geq DN 400 (e.g. WP QF with REED 01)
- MIDs (Magnetic Inductive Meters) (e.g. Meimag MAG 3100 / 5000)
- High pressure meters (e.g. WP QF PN 25/40 with REED 01)
- Hot water meters (e.g. WSD with Reed RD 02)
- Meters of other manufacture



Technical Data

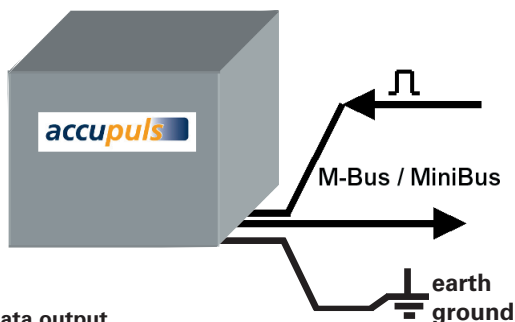
Pulse input

according to ISO / TC 30 / SC 7 / WG 8 draft paper

- Voltage input: max. 24 V
- Max. input frequency: 12 Hz
- Min. pulse length: 32 ms open/close
- Cable length: 3 m

Transient protection is integrated inside accupuls. A reed switch with varistor cannot be used. For Sensus Reed Switches without varistor see accessories.

Note: Owing to the undifferentiated pulse input, reverse flow cannot be identified and will be added to the forward flow total



Data output

- M-Bus and MiniBus (Automatic speed detection and automatic switch over)
- Protocol according EN13757-3 means IEC 870 / EN 1434-3

Data

- Current counter reading with unit
- Meter-ID, fabrication number and customer location
- Momentary flow rate
- Minimum flow rate and date/time
- Maximum flow rate and date/time
- Annual key date values
- Last year and year before last year
- Key date programmable (e.g. 31. Dec.)
- Monthly key date values
- Last 12 months
- Key-date programmable (e.g. 15th of the month)

Settings

- Input pulse value (Default: 1 m³)
- Start index (Default: 0 m³)
- Annual key date (Default: 31. December)
- Monthly key date (Default: 1st of the month)
- Other physical units can be set

Protection class

- IP 68 (1 week under 1 meter water)

Operating life time

- 8 year (lithium battery)

Temperature range

- Storage: 0 °C to + 50 °C
- Operation: 0 °C to + 50 °C

Order Information

accupuls

Order No. 182096

Programming Software

MiniCom (Version > 3.0)

This software can be downloaded from the internet server

www.sensusesaap.com free of charge.

Programming options

- MiniPad (18 20 79) MDK-PC (88 004 082)
- M-Bus directly

Reading-options

MiniReader (182080) current counter reading only

MiniPad (182079) MDK TTL (18 20 81) (in conjunction with PSION Workabout)

MiniPad (182079) MDK PC (88 004 082) (in conjunction with a PC and MiniCom software)

M-Bus directly (norm-compliant M-Bus Data collector and Data converter)

Accessories:

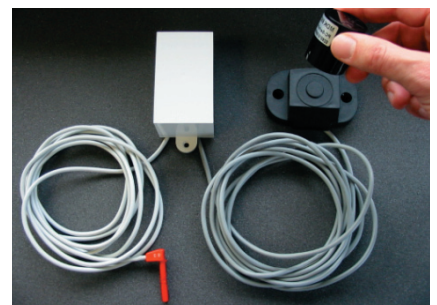
Reed switches:

- | | |
|--------|--------------------|
| R 011 | Order no. 11 36 98 |
| R 022 | Order no. 11 36 99 |
| RD 011 | Order no. 11 78 03 |
| RD 022 | Order no. 11 78 04 |

For compatibility to the meter please see also the datasheet LB 8200 or LB 8400.

Other makes of reed switch with varistor cannot be used.

For details of accessories such as readout devices (e.g. Inductive Meter Reading System), software (e.g. SensusREAD) etc. please see separate leaflets.



qualityaustria
Succeed with Quality

Certified according to ISO 9001
Quality Management System Quality Austria Reg.no. 3496/0

UK & Ireland Enquiries

Sensus UK Systems Ltd, International House, Southampton International Business Park, George Curl Way, Southampton SO18 2RZ UKT: +44 (0) 1794 526100 F: +44 (0) 1794 526101 Email: info.gb@sensus.com www.sensus.com

International Enquiries

Sensus GmbH Ludwigshafen, Industriestrasse 16, 67063 Ludwigshafen Germany
T: +49 (0) 621-6904-0 F: +49 (0) 621-6904-1409 Email: info.int@sensus.com www.sensus.com

