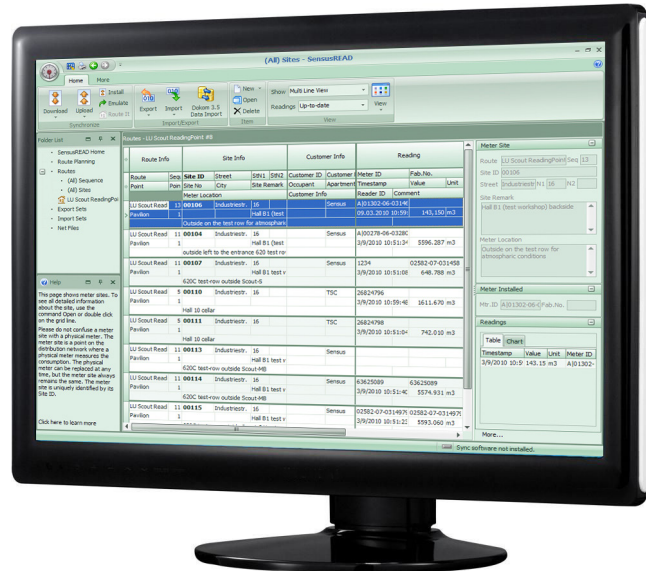
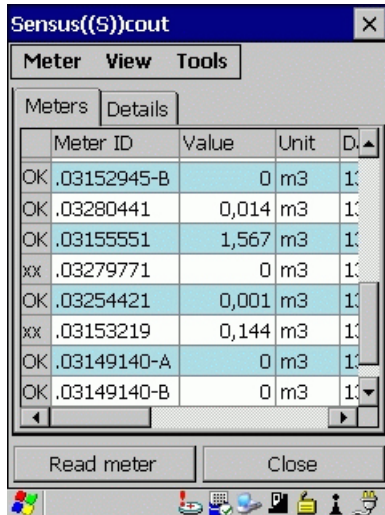


# SensusREAD

## Software for Mobile Meter Readout



## Special Features

- Software for PC and handheld computer
- Easy installation and handling
- Route planning
- Import of route data
- Plausibility check
- Tree structure display of all data on one screen
- Easy preparation of a route through import of meter data from the route planning
- Fast recognition of e.g. plausibility or meter changes by coloured fields
- Export of readout data
- Filtering of data
- Optical readout
- Inductive readout
- Readout via radio by single address or multiple addresses
- M-Bus readout via level converter using primary M-Bus addresses

## Description

SensusREAD is software for the automatic readout of meters using the mobile handheld computer PSION WA pro.

The user can choose between a guided route or the use of a route planning tool. The guided readout is usually used for billing readouts or the readout of a large quantity of meters. Route planning readout is especially suitable for installation and maintenance services or individual meter reading or reading a small quantity of meters.

## Application

- Mobile readout
- Data collection for billing
- Intermediate readout
- Observation of measuring points



## System Requirements

### PC

Minimum System Requirements for SensusREAD

Microsoft Windows XP or Windows Vista or Windows 7

Administrative privileges

Microsoft Internet Explorer 6

512 Megabytes of RAM

Disk space required: 100 MB of free space in the target directory

Microsoft ActiveSync software installed

### Handheld

Psion WA pro C handheld for mobile reading with build in radio modem card for Sensus((S))cout

**Order No. 18 30 64**

Psion WA pro C handheld with build in interface card to connect data coupler

**Order No.18 30 65**

Psion WA pro C handheld build in radio card for Sensus((S))cout and interface card for data coupler

**Order No. 18 30 66**

PSION CarKit holder for car usage incl. mounting kit and 12V charge plug electrical cigarette lighter

**Order No. 18 40 31**

PSION Dock Docking-station for PSION WA Pro incl. USB cable for the data transfer to the PC and battery charge

**Order No. 18 40 32**

## Route Planning

Multiple routes may be managed on one handheld computer

## Export Data Formats

Wysiwyg export to:

XML

Microsoft Excel

HTML

ASCII

All available export formats can be configured

## Order Information

SensusREAD database for up to 50 meters

**Order No. 18 14 52**

SensusREAD database for up to 250 meters

**Order No. 18 14 53**

SensusREAD database for up to 1000 meters

**Order No. 18 14 54**

SensusREAD database for up to 2500 meters

**Order No. 18 14 55**

SensusREAD database for unlimited amount of meters

**Order No. 18 14 56**

Add on for SensusREAD: Direct read using PC, LapTop, Notebooks etc. and following interfaces connected via RS232, USB or BlueTooth (IV)

**Order No. 18 14 48**

SensusREAD Training Installation (1 day in home country)

**Order No. 18 20 90**

Update Dokom Mobile >> SensusREAD

**Order No. 18 14 57**

Components i.e. for inductive or radio readout refer LS3100, LS3300



**qualityaustria**  
Succeed with Quality

Certified according to ISO 9001  
Quality Management System Quality Austria Reg.no. 3496/0

### UK & Ireland Enquiries

Sensus UK Limited, International House, Southampton International Business Park,  
George Curl Way, Southampton SO18 2RZ, United Kingdom  
T: +44 (0) 1794 526100 F: +44 (0) 1794 526101 Email: info.gb@sensus.com [www.sensusaap.com](http://www.sensusaap.com)

### International Enquiries

Sensus GmbH Ludwigshafen Industriestrasse 16, 67063 Ludwigshafen Germany  
T: +49 (0) 621-6904-0 F: +49 (0) 621-6904-1409 Email: info.int@sensus.com [www.sensusaap.com](http://www.sensusaap.com)

