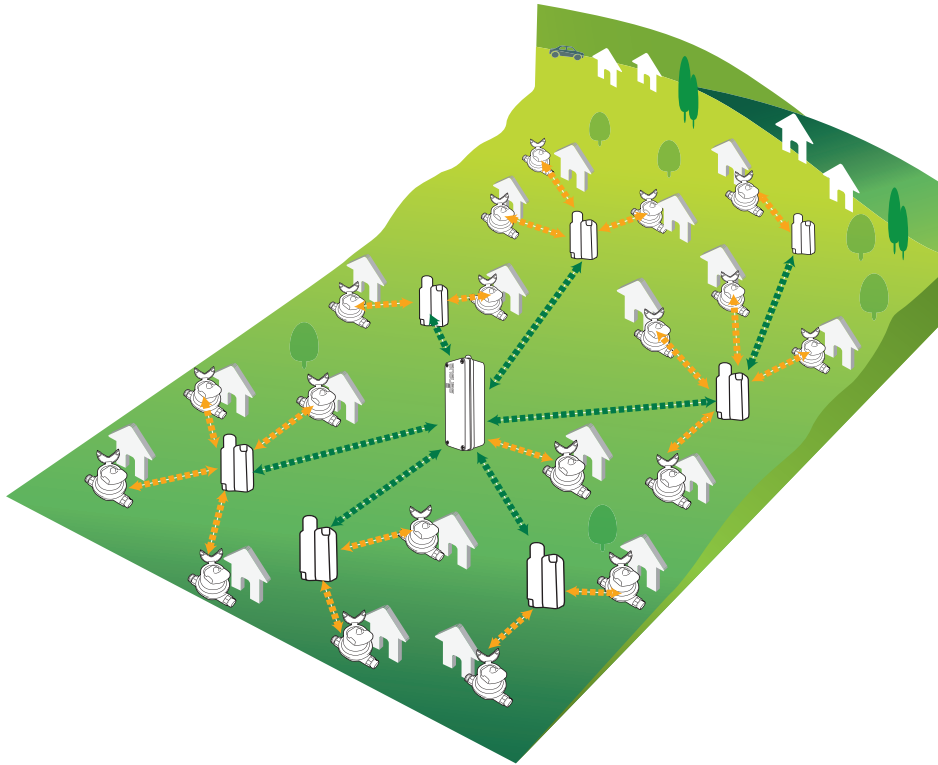


# Sensus((S))cout Web

## GPRS Remote Gateway Access



### Application

The Sensus((S))cout Web Gateway combines the advantage of the Sensus((S))cout well proven technology for walk and drive by solutions with a step up to a fixed remote reading systems. The existing meter base can be easily used for a cost efficient and high performance AMR system.

- ✓ The main applications are:
- ✓ Remote meter reading for billing
- ✓ Monitor for maintenance, meter sizing, leakage detection, manipulation
- ✓ Logging for consumption profiles
- ✓ Smart Metering applications

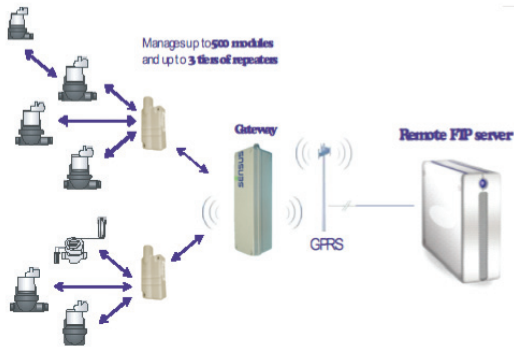
### Special Features

- ✓ Easy installation using an Excel sheet configuration
- ✓ Possible to extend an existing Walk By installation to a fixed remote reading solution
- ✓ Meter readings can easily transferred to existing Billing software
- ✓ Supports 25mW & 500mW ISM radio
- ✓ All occurring alarms\* like cable cut, leakage, reverse flow, broken pipe, low battery are transferred to the remote server
- ✓ System can be installed onto an existing FTP server
- ✓ Configuration per SMS text message possible

\*Alarms depending in the radio module. Details can be found in LS3300.

## Principle

Using a horizontal radio network with transponders, transponders used as repeaters and Sensus((S))cout-Rep long distance repeaters a GPRS Gateway Sensus((S))cout-Web can read up to 500 metering endpoints and supports up to 3 tiers of repeaters. The Gateway is connected to a FTP-Server via a GPRS connection. Network administration and read-out data are managed by easy to use Microsoft Excel data sheet.



Collects data at a configurable frequency

Stores data as **XML** or **CSV** files

Transfers the files at a configurable frequency

Notifies the server automatically in case of alarms

Remote management of Scout modules

### Upload:

Data files and alarm files

### Download:

Gateway configuration file

Radio mesh configuration file

Command files

New firmware

## System Compatibility

All Sensus((S))cout radio endpoints and repeaters

like Sensus((S))cout-S, Sensus((S))cout-P, Sensus((S))cout-MB, Sensus((S))cout-Rep

## Technical Data

Function:	GPRS Remote Gateway Access
Dimensions: width/height/depth	85 x 230 x 70 mm
Weight:	approx. 750 g
Fastening:	wall mounting
Protection class:	IP 66
Temperature range:	-20°C to +55°C
Storage temperature:	-40°C to +85°C
Power supply:	9-24 VDC external supply
Frequency:	ISM Band 868 MHz 500 & 25mW
Antennas:	internal GSM, internal ISM
Modem:	integrated Quadband GSM
Power adapter:	230V AC /12V DC

## System Requirements

Sensus((S))cout-Web requires a SIM card enabling data transmission by GPRS.

FTP Server with a fixed IP address is requested. Sensus((S))cout-Web needs read and write access to 3 directories from this FTP server.

High frequent reading intervals like daily will decrease battery lifetime of repeaters and radio modules.

## Order Data

Sensus((S))cout-Web	order no: 4410574
GPRS remote access gateway Incl. power adapter & GSM antenna	



Certified according to ISO 9001  
Quality Management System OQS Reg.no. 3496/0

### UK & Ireland Enquiries

Sensus Metering Systems 11 The Quadrangle, Abbey Park, Romsey, Hampshire SO51 9DL UK  
T: +44 (0) 1794 526100 F: +44 (0) 1794 526101 Email: info.gb@sensus.com [www.sensus.com](http://www.sensus.com)

### International Enquiries

Sensus GmbH Ludwigshafen Industriestrasse 16, 67063 Ludwigshafen Germany  
T: +49 (0) 621-6904-0 F: +49 (0) 621-6904-1409 Email: info.int@sensus.com [www.sensus.com](http://www.sensus.com)