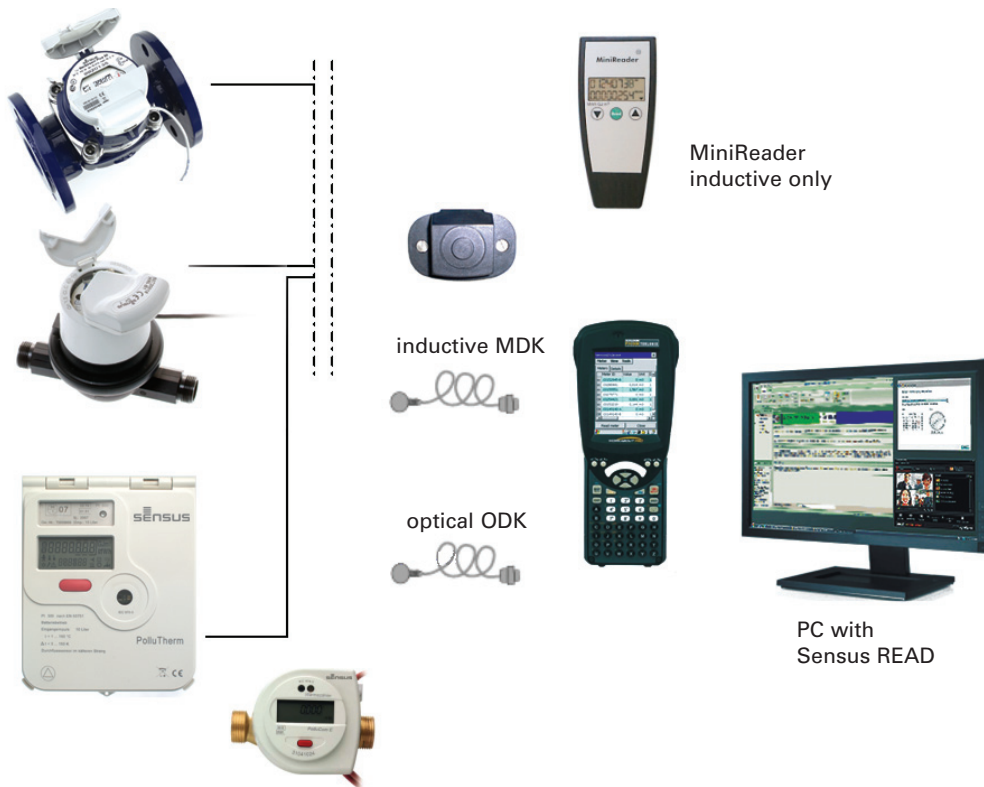


# MiniBus

Inductive and optical walk by reading system  
(acc. M-Bus Protocol)



## Meter reading on site via the optical or inductive interface:

The following meters can be read:

- Domestic water meters Sentinel with HRI data interface
- Bulk water meters from Sensus with MiniBus preparation
- Heat meters Pollu.....

The MiniReader provides inductive reading only.

## Further reading opportunities with the Handheld PSION WA pro:

- Meters with an optical interface like Pollu..... heat meters
- M-Bus level converter
- Radio transponder Sensus((S))cout 868MHz

## MiniPad

---



Inductive data coupler (wall mounting) to connect bulk water meters from Sensus with MiniBus output domestic water meters with HRI-S or heat meters PolluStatE/PolluTherm via terminals 51/52. PolluComE has to be ordered as MiniBus variant.

Recommendation for the cable length max. 30m.

**Order No. 18 20 79**

## MiniReader

---



Simple reading device to display meter index and serial number of the last 16 read meters. To make a read out the MiniReader is put on the MiniPad.

The MiniReader doesn't provide a data interface to a PC.

**Order No. 18 20 80**

## Inductive data-coupler

---



**MDK-USB-PC** for the connection with a PC USB interface; i.e. with MiniCom to program devices.

**Order No. 18 40 81**



**MDK-TTL-WA** with a Hirose plug for direct connection with PSION WA pro C. For Dokom mobile the TTL channel is used.

**Order No. 18 40 84**

## Optical data-coupler

---



**ODK-USB-PC** for the connection with a PC USB interface; i.e. with MiniCom to program devices.

**Order No. 18 40 23**



**ODK-RS232-WA** with a Hirose plug for direct connection with PSION WA pro C. For Dokom mobile the RS232 channel is used.

**Order No. 18 40 86**

## PSION WA Pro C G2 data coupler Interface

---



Handheld with rechargeable battery, mobile reading software and build-in interface card to connect data-coupler  
(MDK-TTL, ODK-USB, radio modem)

Order No. 18 30 65

## PSION WA Pro C G2 data coupler Interface and Sensus((S))cout Radio

---



Handheld with rechargeable battery, mobile reading software and build-in interface card to connect the data- coupler

MDK-TTL-WA ODK-RS232-WA

For Sensus((S))cout radio reading the internal radio modem is also built-in.

Order No. 18 30 66



## Docking-station Psion Dock

---

With USB cable to connect to the handheld Psion WA pro.

The docking-station provides for data transfer to a PC via USB interface and also recharges the battery.

Part of the delivery is a 100...240V (50/60Hz) mains power supply.

Order No. 18 40 32

## Psion car-kit

---



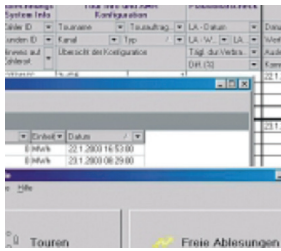
Facility to recharge the Psion WA pro battery via the 12V cigarette lighter socket.

Includes the installation materials and 12V plug.

Order No. 18 40 31

## Sensus READ

---



The handheld is delivered with this software pre-installed. For data transfer via the docking-station Psion Dock Sensus READ is needed on the PC.

For installation on the PC the Sensus READ is delivered with a registration key.

Further information about Sensus READ is on the leaflet LS 3400.

**Order No. 18 41 23**

## Installation and training Sensus READ

---



Software installation on site and training of user staff.

Duration 1 day.

Different countries and languages on demand.

**Order No. 18 20 90**



Certified according to ISO 9001  
Quality Management System OQS Reg.no. 3496/0

### UK & Ireland Enquiries

Sensus Metering Systems 11 The Quadrangle, Abbey Park, Romsey, Hampshire SO51 9DL UK  
T: +44 (0) 1794 526100 F: +44 (0) 1794 526101 Email: [info.gb@sensus.com](mailto:info.gb@sensus.com) [www.sensus.com](http://www.sensus.com)

### International Enquiries

Sensus GmbH Ludwigshafen Industriestrasse 16, 67063 Ludwigshafen Germany  
T: +49 (0) 621-6904-0 F: +49 (0) 621-6904-1409 Email: [info.int@sensus.com](mailto:info.int@sensus.com) [www.sensus.com](http://www.sensus.com)